

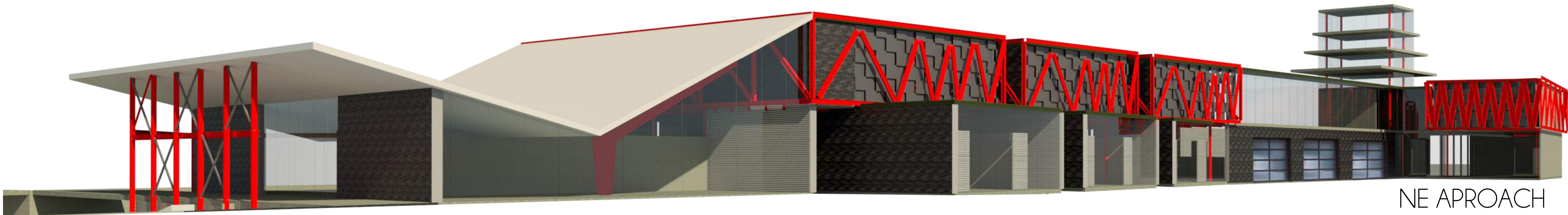
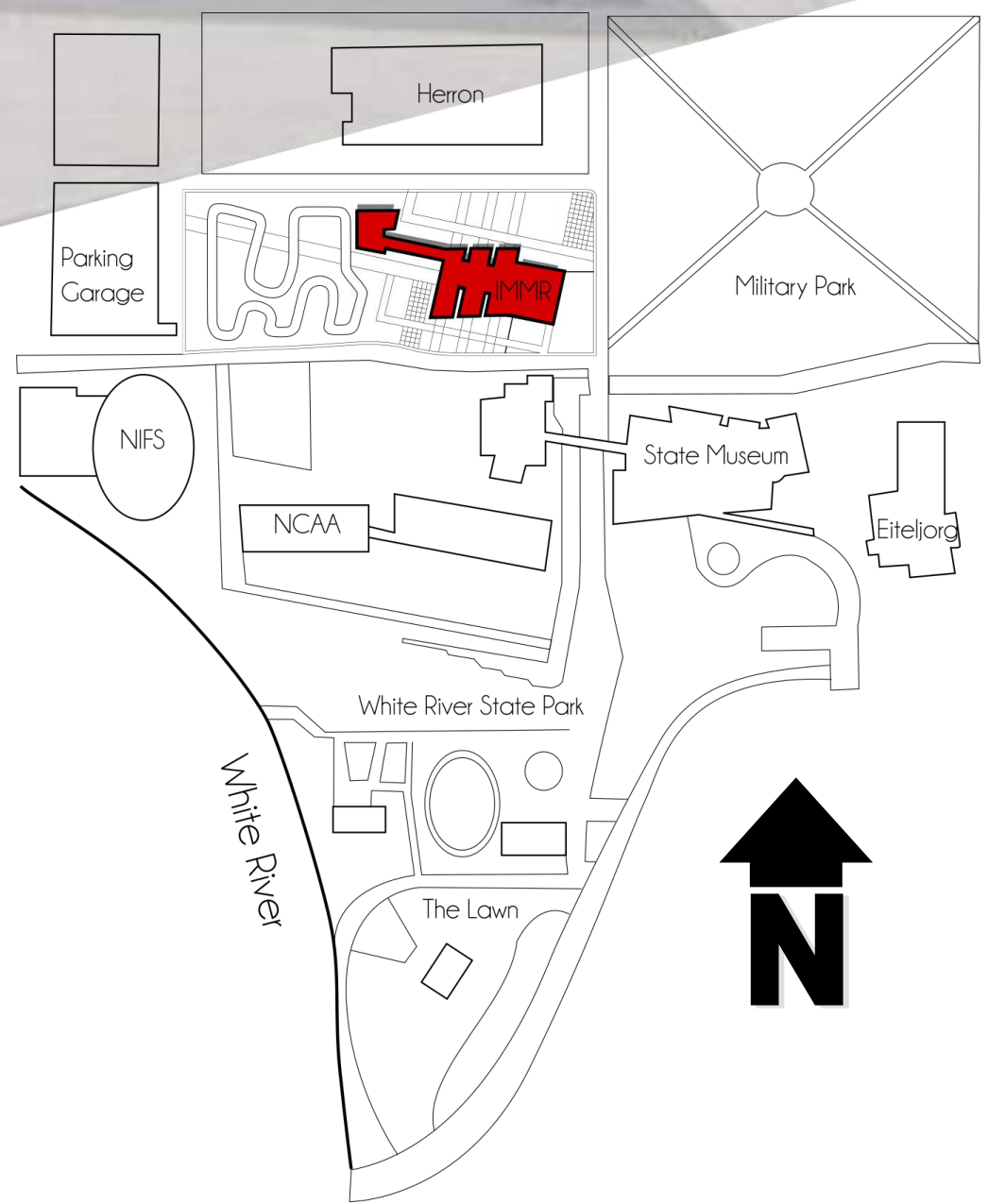
INDIANAPOLIS MUSEUM OF MOTORSPORTS & RACING



BRINGING INDIANA'S RACING HERITAGE TO DOWNTOWN

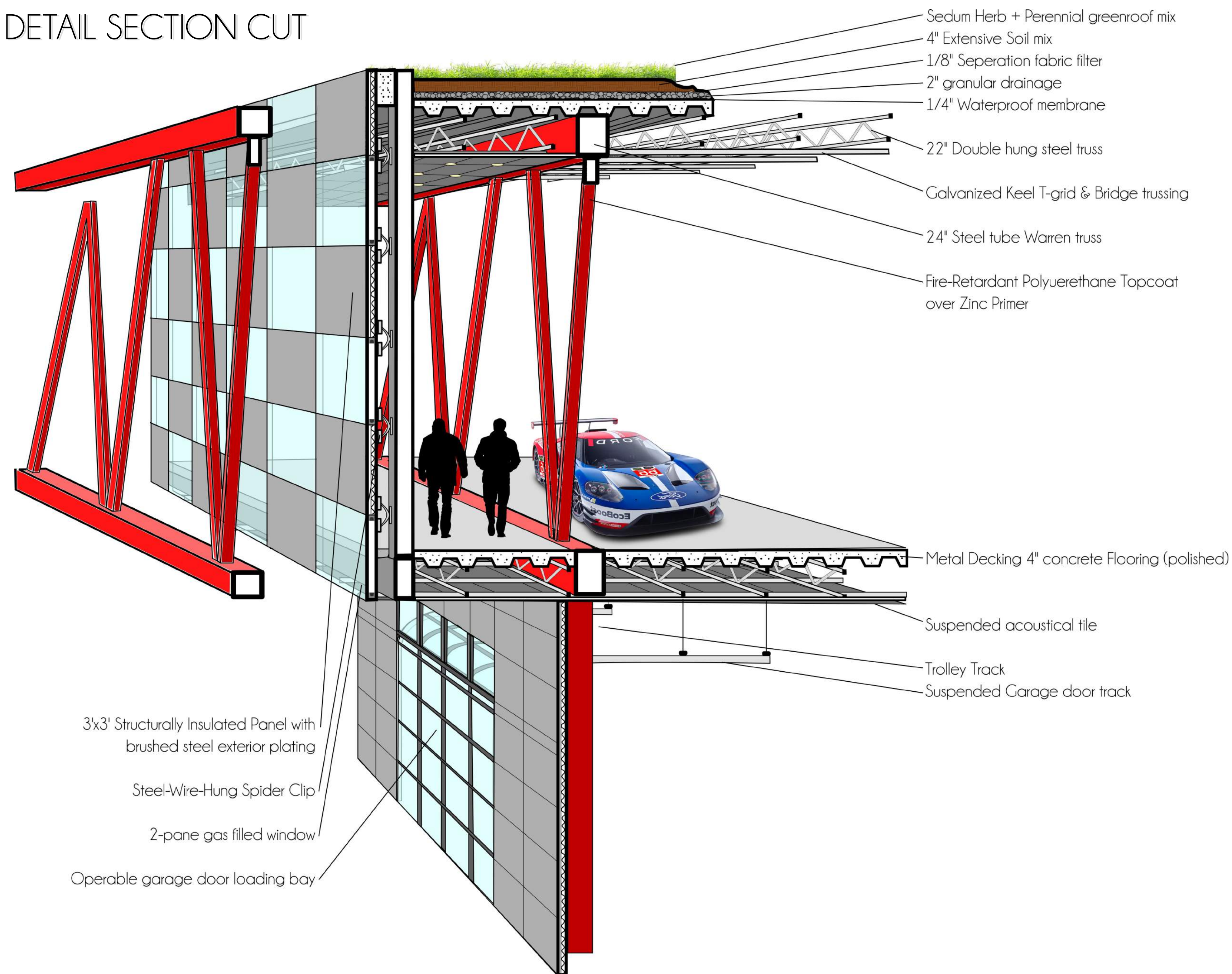
Indianapolis is internationally known for the Indy 500 and being the Racing Capital of the World. However there is a missed opportunity to showcase the city as such. The Proposed Indianapolis Museum of Motorsports and Racing brings this racing heritage to downtown. Being located downtown in the White River Park Campus allows easy access from those visiting the city, as well as a large flow of pedestrians who use the canal and visit other museums. The current IMS racing museum, is located in Speedway, not to mention inside of the race track. This deters business to the museum due to its inaccessibility and distance, as well as its limited INDY 500 content within. The IMMR would include all types of motor-

sports and racing and would not be limited to one particular type. Examples of the museum's content would include racing from Motorcross, Rallysport, Trophy truck, Baja, Nascar, Indycar, Boat Racing, Drag racing, Tractor and Truck Pulling, Tractor Racing, Moto GP, etc. The museum houses both vehicles and race memorabilia such as associated artwork, jerseys, helmets, trophies etc. To further increase traffic to the museum, the site is excavated in the SE corner to pull in the canal on-site, forcing pedestrians to interact with the museum front. The café and parking garage are located on the canal level, which remain open past hours, heavily helping parking downtown during events.



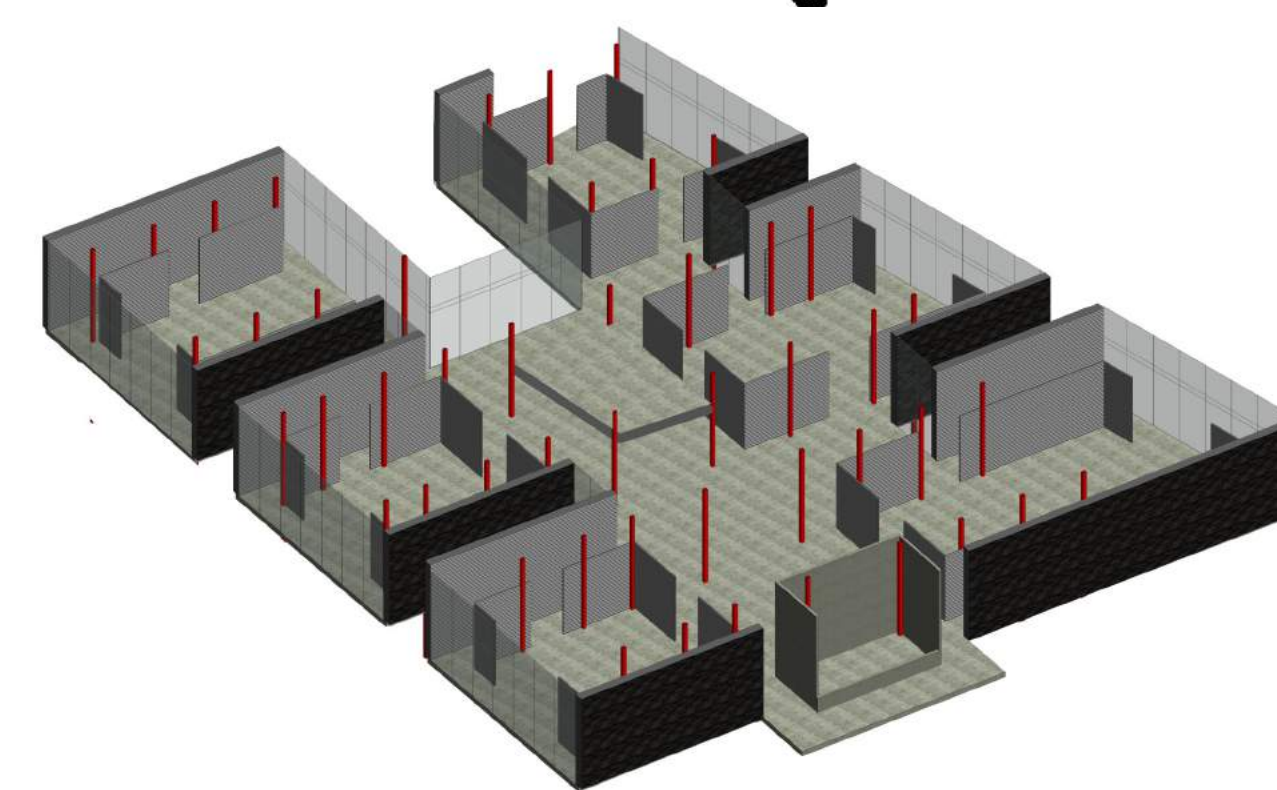
NE APPROACH

WALL DETAIL SECTION CUT

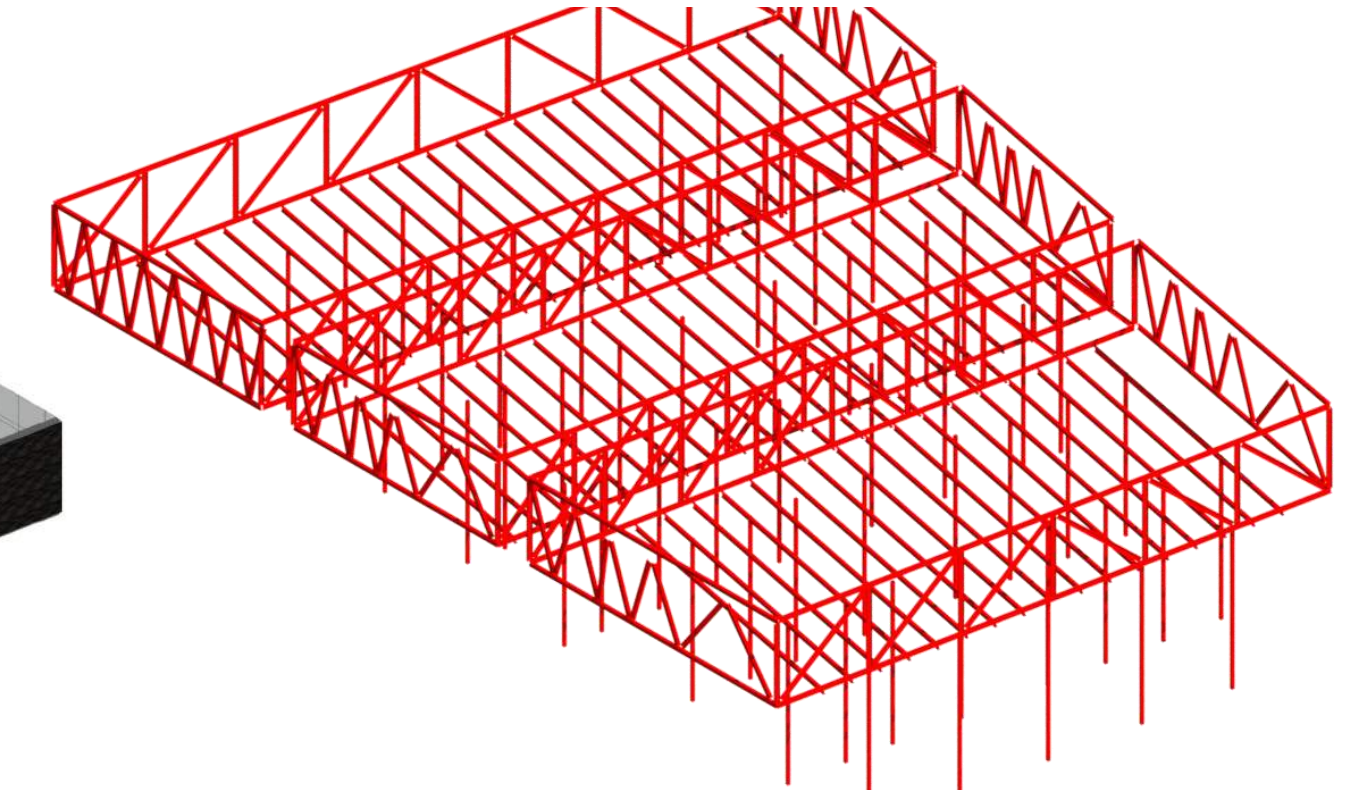


Structure

The Building utilizes a steel structure. The column grid starts underground in the parking level, moving up to floor 2. Each floor of steel beams support a 4" concrete metal deck & slab, 22" double-hung steel trusses, and suspended acoustical ceiling tile. The short span is 45' across. The interior steel columns are only 30' O.C. allowing them to set within the building. The excess 7.5' on each side of the 30' cantilever over. The large tube beam Howe trusses that span the exterior allow for the cantilever of second floor south facade, while carrying the weight of the vehicles and live-load inside. This also creates a unique opportunity to be true to the structure and reveal it.



FIRST FLOOR STRUCTURE & PARTITION GALLERY WALLS



STEEL-TUBE TRUSS AND BEAM STRUCTURE

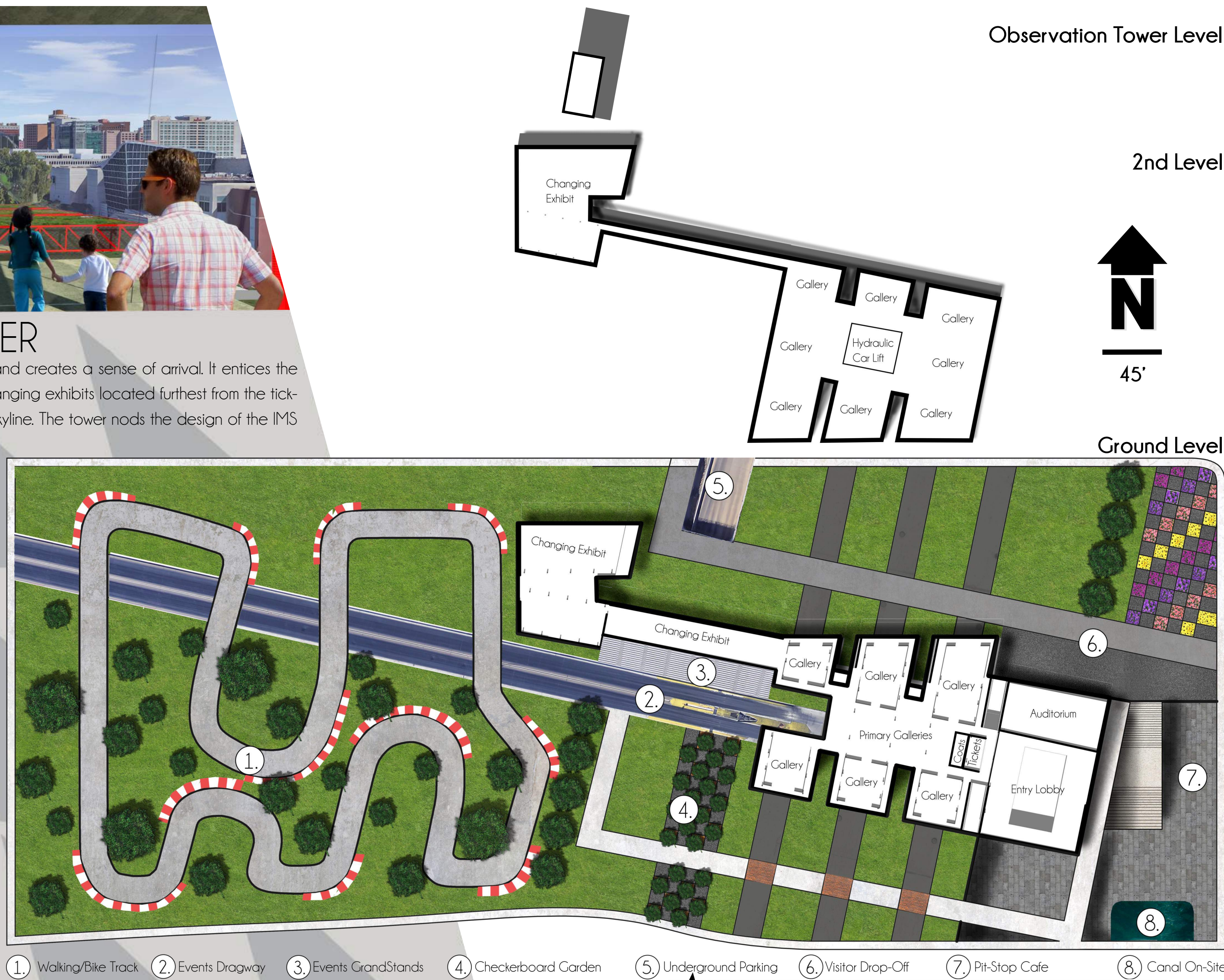


OBSERVATION TOWER

The Observation Tower creates a destination and creates a sense of arrival. It entices the patrons of the museum to head towards the changing exhibits located furthest from the ticket booth. It allows people unique views of the skyline. The tower nods the design of the IMS Pagoda.

PROGRAM SQUARE FOOTAGES

Function	Square Footage
Permanent Gallery	36,193
Changing Exhibits	15,812
Total Gallery	52,002
Administration	2,931
Service	5,618
Ancillary Areas	4,667
Museum Total	65,218 SF



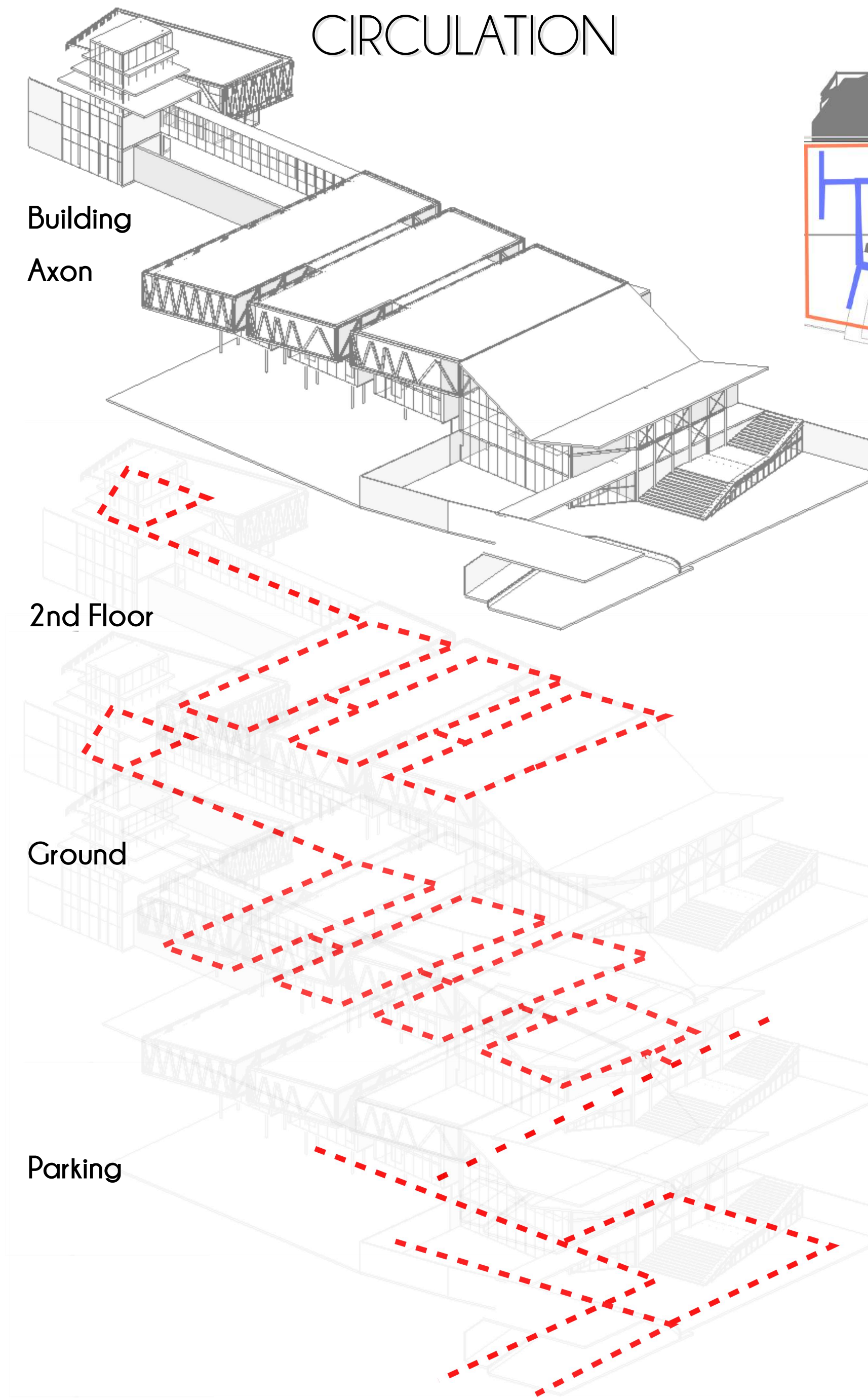
RACING GALLERY



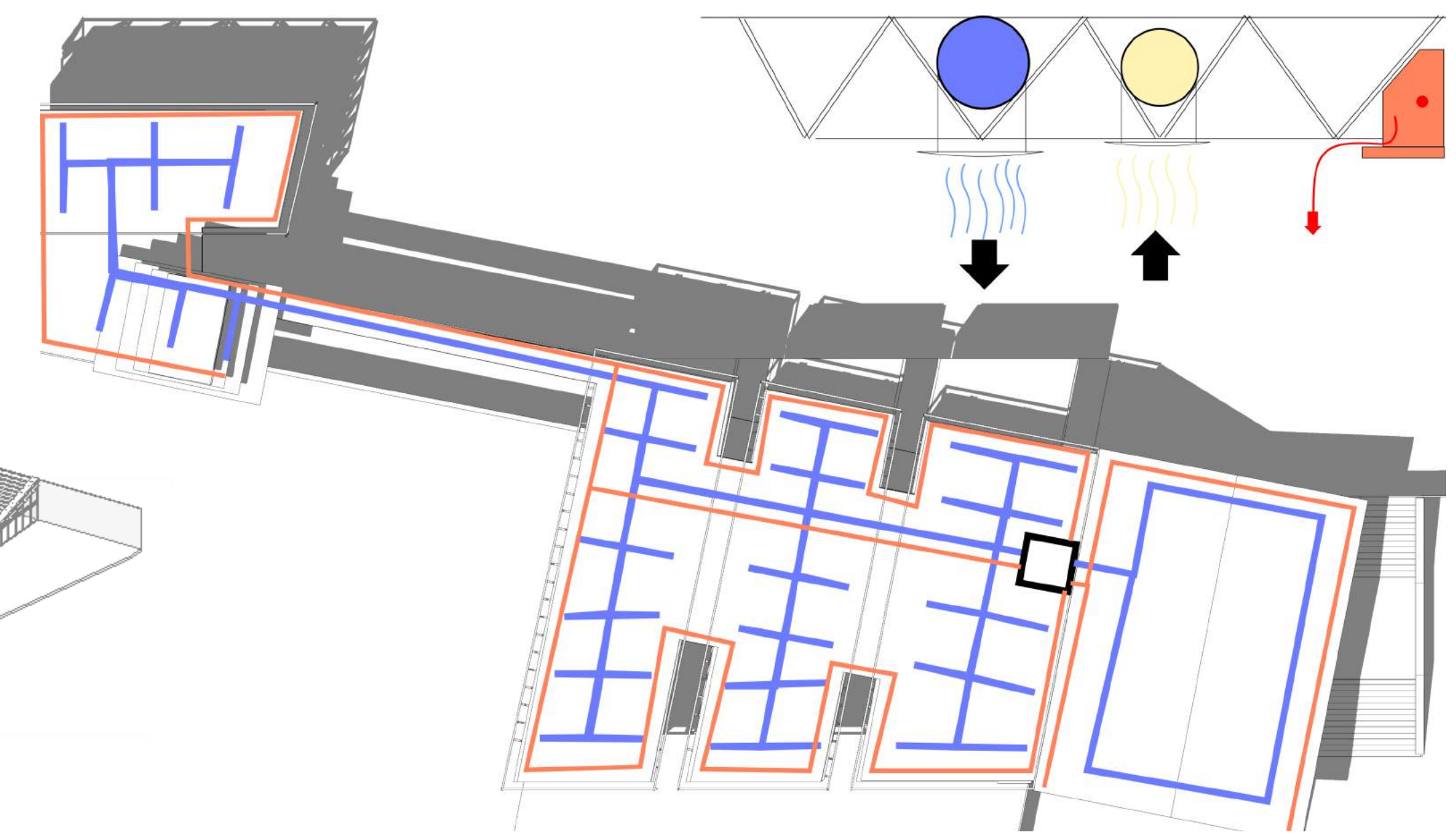
Connecting The City After Hours

The underground parking garage lets into the open plaza, to allow users to connect to the canal even after the Museum is closed. The Café is also accessible from the canal level, enticing pedestrians with its sweet smells. Both decisions were made for the purpose of extending the use of each beyond just the museum. You can also access the museum from the canal level as well as from ground level, giving the user options and more ways to make it in the doors.

CIRCULATION

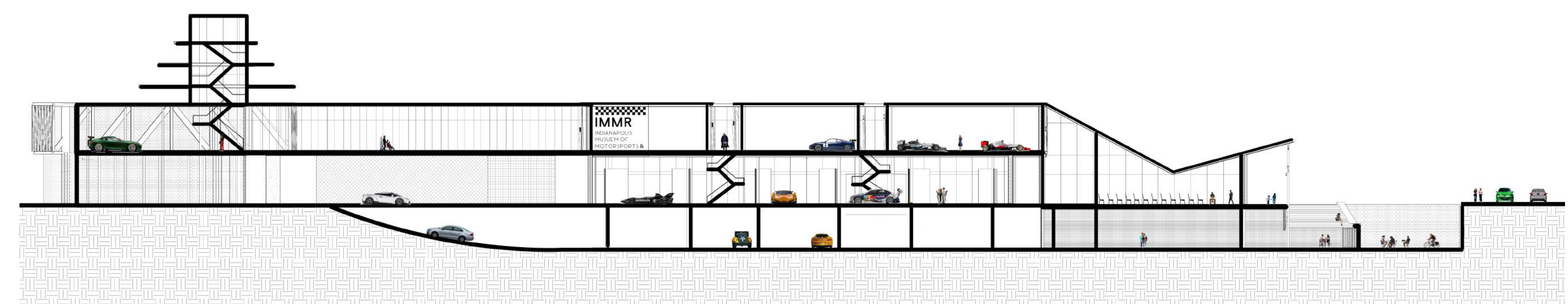
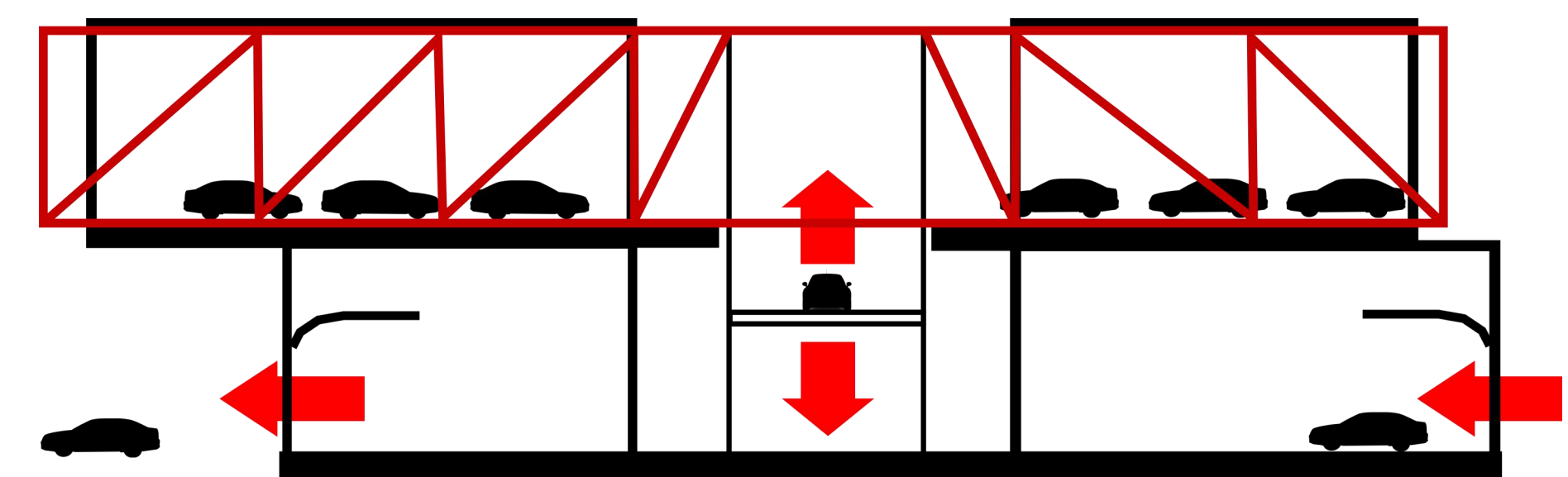


HEATING & COOLING



Hydraulic Lift & Loading Bays

The Museum was designed to quickly and easily move vehicles in and out as well as up and down stories. At the end of every Exhibit bay is an insulate glass garage door. This allows for each bay to move vehicles around, sell them, buy them, move inventory. This eliminates a centralized loading bay and creates easy access from anywhere in the museum. The centerpiece for lifting cars is a hydraulic elevator. During exhibits, it remains halfway up with automobiles displayed on it. During movement, the lift is cleared and vehicles lift.



MUSEUM SECTION